

Windows NT 4 – Configuring a CD-ROM Drive with future Hardware Upgrades in mind

You install a game on your PC that runs from the CD. Then, you install Microsoft Encarta. Then IBM WorldBook. All, programs that run from your CD-ROM drive, **drive D:**. Then, at some stage many months later, you run out of hard disk space and you have a **second hard disk** installed. What happens next ?

What happens next is that your new second hard disk becomes D:, your CD-ROM drive becomes **drive E:** , and suddenly your games, Encarta, and WorldBook no longer work. Disaster. You have to re-install them all. And you do not even know how to, because, possibly, someone else installed the original software for you.

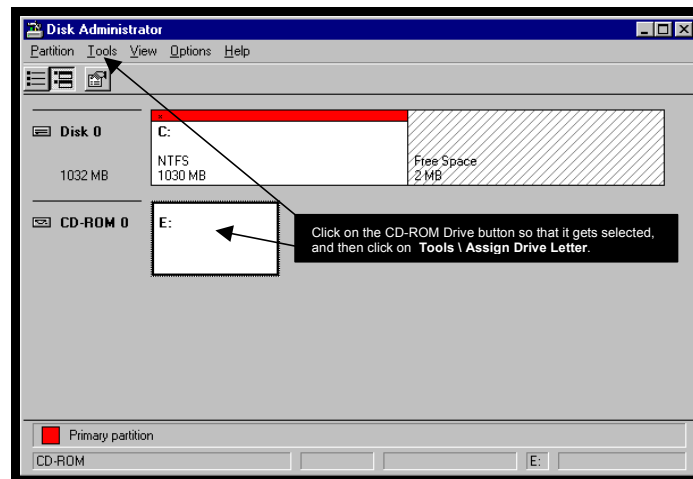
This happens time and time again, and we have had so many distressed AnswersThatWork users wondering what to do that we decided to produce this simple guideline document to help users protect themselves against future upgrades of their PCs.

Changing the CD-ROM Drives letter

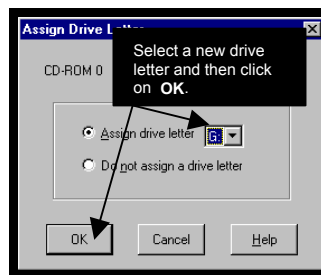
*The above scenario occurs solely because over 90% of PCs come configured with the **CD-ROM drive installed as drive D:**. This is incredibly short-sighted, even in these days of large hard disks (10Gb or more) as it basically means that as soon as you decide to upgrade your hard disk capacity through the addition of a second hard disk, your CD-ROM drive will have its drive letter changed as a result of the second hard disk taking over the letter D: .*

*At **AnswersThatWork**, as standard practice, we always configure CD-ROM drives a "few letters away" from the last hard disk letter. So, for instance, if at "birth" a PC's last hard disk is, say, drive G:, then we would configure the CD-ROM drive to occupy K or higher, thus allowing us to add new hard disks to the PC without the CD-ROM drive's letter being changed as a result. So, to protect yourself against future hardware upgrades :*

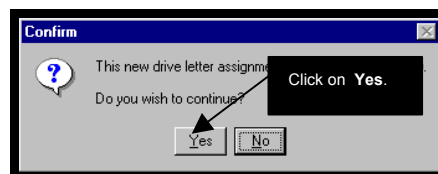
- Close all programs.
- Click on **Start \ Programs \ Administrative Tools \ Disk Administrator**.



- Click on the CD-ROM Drive button so that it gets selected, and then click on **Tools \ Assign Drive Letter**.



- Select a new drive letter and then click on the **OK** button. You will now be prompted with a dialogue box that asks you to confirm the drive letter change. Click on **Yes**.

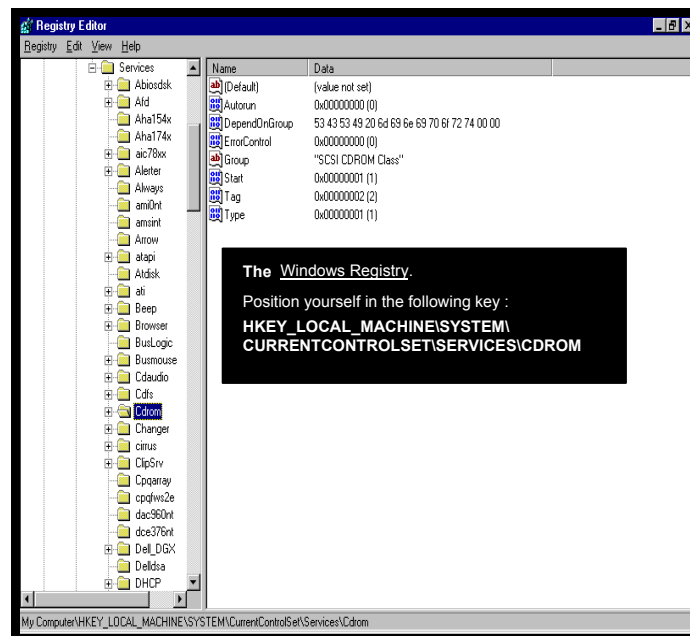


- That's it, no reboot is needed with Windows NT!
- You can now safely install **CD based** software on your PC knowing that you are "insured" against drive letter re-assignments if you install a second hard disk later on in the life of your PC.

Taking off the 'Auto Insert Notification' option

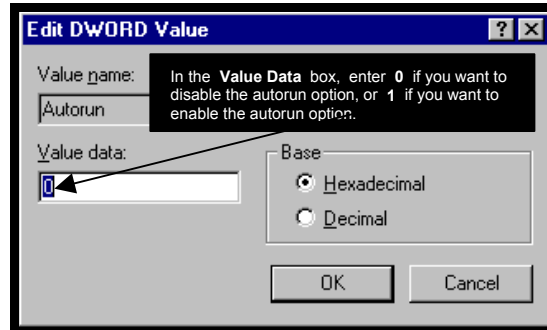
On a completely different issue, while we are on the subject of CD-ROM drives, if like many other users you find extremely irritating the fact that a setup/installation procedure starts every time you put a CD-ROM into your CD-ROM drive, you can actually turn this option off. However, because this process involves editing the Windows NT Registry, **we do not advise beginners to do the following**, as one mistake could leave your PC in a position where some programs/hardware no longer work properly, or where Windows NT no longer starts. If you know how to edit the Registry, do as follows :

- Close all programs.
- Click on **Start \ Run**, type **REGEDIT** and then click on **OK**. You will now be in the **Windows Registry**.



- As show above, position yourself in the following key :
HKEY_LOCAL_MACHINE\SYSTEM\CurrentControlSet\Services\CDRom

- On the right hand side of the Windows Registry screen, locate the **Autorun** value, do a right click on it and select **Modify**.



- In the **Value data** box, enter a value of **0 to disable** the autorun option, or **1 to enable** the autorun option.
- Click on **OK**.
- Close the Windows Registry.
- Reboot the PC straight away by clicking on **Start / Shutdown / Restart the Computer**.
- On restart, put a self-starting CD (e.g. Microsoft Office) into the CD-ROM drive, and test that it no longer autoruns.
- That's it. You're done.**

ooooooooOOOOOOOoooooooo