

Configuring Windows ME Explorer to behave as in Windows 95/98

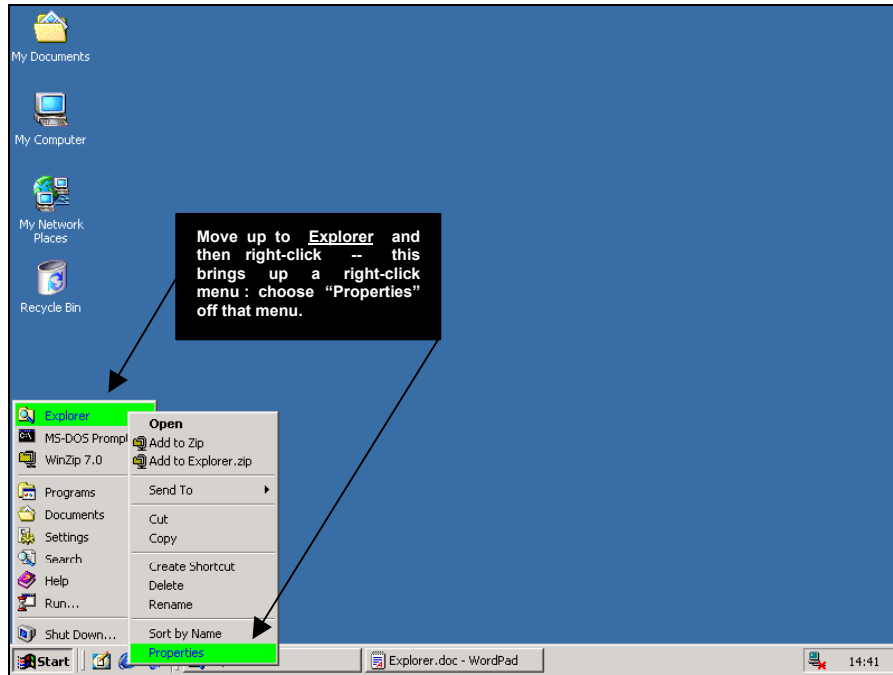
How typical. You get used to Explorer (Windows Explorer) always opening onto your C: drive in Windows 95, Windows 98, and Windows NT; you get used to a standard, and then **Windows ME (Millennium Edition)** comes along, you install it with excitement and anticipation, immediately open Explorer and “What the hell is this !-=%\$£***!!” Yes, you suddenly find that Windows ME’s Explorer now opens onto the **My Documents** folder, straight off the desktop !

It takes some getting used to, in fact most regular Windows users never get used to it for it is effectively a beginner level feature which has regular and advanced users wasting time drilling down to their C: drive to do **real work**.

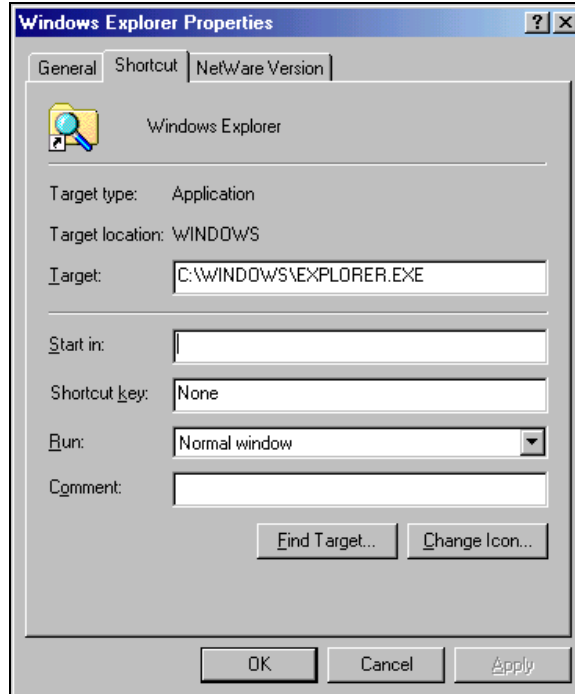
If you too find this behaviour frustrating, and would like to configure **Windows ME Explorer** to behave like its Windows 95/98/NT older brothers, do as follows :

Re-configuring WinME Explorer

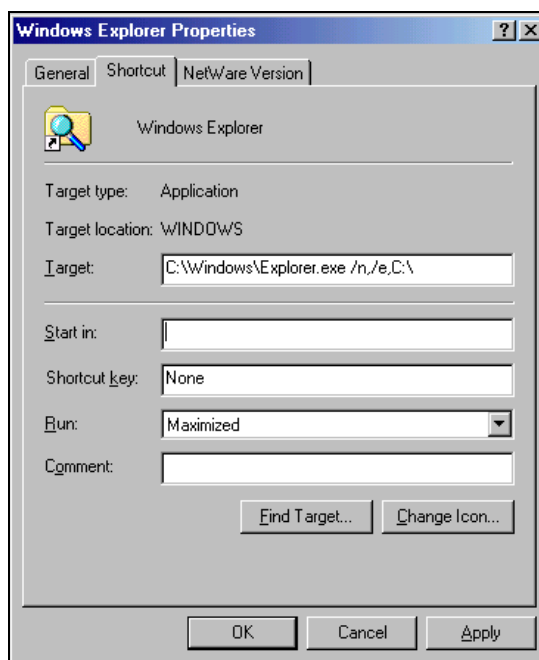
- Click on **Start** and move up (and possibly across) to the **Windows Explorer** menu option.
- When positioned on the option, right-click. This brings up a secondary contextual menu.
- Choose **Properties** on that menu, as shown below (in the example below we have placed Windows Explorer onto our Start Menu and renamed it “Explorer” - in your case it may still be called “Windows Explorer” and placed under “Start \ Programs \ Accessories”) :



- The Properties sheet for Windows Explorer will come up. Click on the Shortcut tab at the top, and you should get the window below :



- Move to the **Target** field and add “ /n,/e,C:\” at the end of it so that it looks as shown below :



- Change the “Run” field to **Maximized** so Explorer always opens in full-screen mode.
- Click **OK**.
- You're done.** From now on Explorer will always open onto your C: drive, à la Windows 95/98/NT.

Explanation of the changes

- /e** : This switch starts Explorer in the **dual-pane** mode, with the drives and folders in the left pane, and the contents of the drive/folder highlighted on the left, showing in the right pane - ie. The usual Explorer view. *Without this switch Explorer will open as one, un-split, window.*
- /n** : This switch starts a **new** Explorer screen regardless of whether you already have Explorer opened or not. *Without this switch, if you already have Explorer opened, Windows switches to it and re-positions it onto your C: drive – it does not open a new Explorer screen.*

C: : This specifies that you want Explorer to open onto your C: drive. You can change this to virtually any folder you like, e.g. F:, H:. *If you want to open it onto a subfolder whose name includes spaces then enclose the whole of the folder name inside quotes, e.g. /n,/e,"C:\Program Files".*

ooooooooOOOOOOoooooooo