

Configuring a CD-ROM drive with future hardware upgrades in mind

You install a game on your PC that runs from the CD. Then, you install Microsoft Encarta. Then IBM WorldBook. All, programs that run from your CD-ROM drive, **drive D:**. Then, at some stage many months later, you run out of hard disk space and you have a **second hard disk** installed. What happens next ?

What happens next is that your new second hard disk becomes D:, your CD-ROM drive becomes **drive E:** , and suddenly your games, Encarta, and WorldBook no longer work. Disaster. You have to re-install them all. And you do not even know how to, because, possibly, someone else installed the original software for you.

This happens time and time again, and we have had so many distressed AnswersThatWork users wondering what to do that we decided to produce this simple guideline document to help users protect themselves against future upgrades of their PCs.

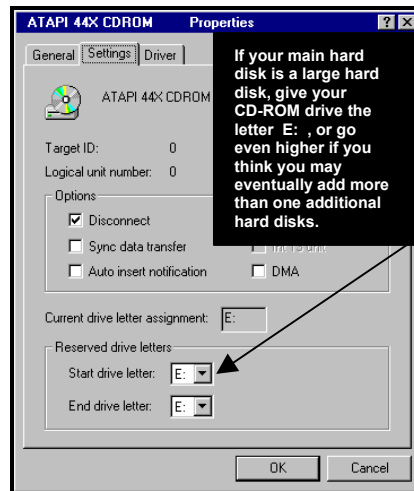
Changing the CD-ROM Drives letter

*The above scenario occurs solely because over 90% of PCs come configured with the **CD-ROM drive installed as drive D:**. This is incredibly short-sighted, even in these days of large hard disks (10Gb or more) as it basically means that as soon as you decide to upgrade your hard disk capacity through the addition of a second hard disk, your CD-ROM drive will have its drive letter changed as a result of the second hard disk taking over the letter D: .*

*At **AnswersThatWork**, as standard practice, we always configure CD-ROM drives a "few letters away" from the last hard disk letter. So, for instance, if at "birth" a PC's last hard disk is, say, drive G:, then we would configure the CD-ROM drive to occupy K or higher, thus allowing us to add new hard disks to the PC without the CD-ROM drive's letter being changed as a result. So, to protect yourself against future hardware upgrades :*

- Close all programs.
- Click on **Start \ Settings \ Control Panel \ System** and choose the **Device Manager** tab.

- Locate the **CDROM** label, double click on it, and you will now see your CD-ROM Drive icon appear underneath. Click on your CD-ROM Drive icon so that it appears highlighted, and then click on the **Properties** button. You will now be prompted with a screen that looks like the one below :



- Choose the **Settings** tab, and give your CD-ROM drive an appropriate drive letter. *As indicated in the illustration above, for a brand new PC, which will probably have a minimum of an 8Gb hard disk, choose a CD-ROM drive letter of either **E:** or **F:** .*
- Click on **OK**, and **OK** again. You will now be prompted to restart your PC, click on **Yes**.
- On restart if you go into Windows Explorer you will find that your CD-ROM drive is now E: (or F: if you chose F:).
- You can now safely install **CD based** software on your PC knowing that you are “insured” against having to install a second hard disk later on in the life of your PC.

Taking off the 'Auto Insert Notification' option

On a completely different issue, whilst we are on the subject of CD-ROM drives, if like many other users you find it extremely irritating the fact that a setup/installation procedure starts every time you put a CD-ROM into your CD-ROM drive, you can actually turn this option off. As follows :

- Close all programs.
- Click on **Start \ Settings \ Control Panel \ System** and choose the **Device Manager** tab.
- Locate the **CDROM** label and double click on it, you will now see your CD-ROM Drive icon appear underneath. Click on your CD-ROM Drive icon so that it appears highlighted, and then click on the **Properties** button.
- Choose the **Settings** tab, and un-tick the **Auto Insert Notification** option.
- Click on **OK** and **OK** again. You will now be prompted to restart your PC, click on **Yes**.
- That's it. You're done.

In case you did not know...

*If you have a particular need to keep the **Insert Notification** option set to **ON**, you can still stop a CD from automatically starting up when you put it into the CD-ROM Drive by simply holding down the **SHIFT** key on the keyboard as you close the CD-ROM drive :*

- Put the CD you want to use, into the CD-ROM Drive.
- Hold down the **Shift** key on the keyboard.
- Close the CD-ROM drive. The CD will not auto start !

ooooooooOOOOOOOoooooooo