

## Enabling the “*Workstation-Only*” and “*Advanced Button*” in Safe Mode

### When to use this document

You will need this document if all of the following are true :

- **Workstation-Only** and the **Advanced Button** have both been disabled on the PC you are working with.
- The PC is normally member of a Domain which means that the default login mode of the PC is to login to the Novell server first and then login to a Windows Domain Controller (either through a second prompt, or seamlessly if you have Single Sign-on turned ON).
- The PC is not currently connected to the same network as the Domain Controller that it is normally attached to.
- As a result you want to login locally to the PC (e.g. with the local Administrator login) in order to do whatever work you need to do on that PC.
- **Problem** : because both the **Workstation-Only** and **Advanced Button** are disabled (for security purposes), you find that you cannot login to the PC as a result of all of the above. You cannot login in either *Normal Mode* or *Safe Mode with Networking*.

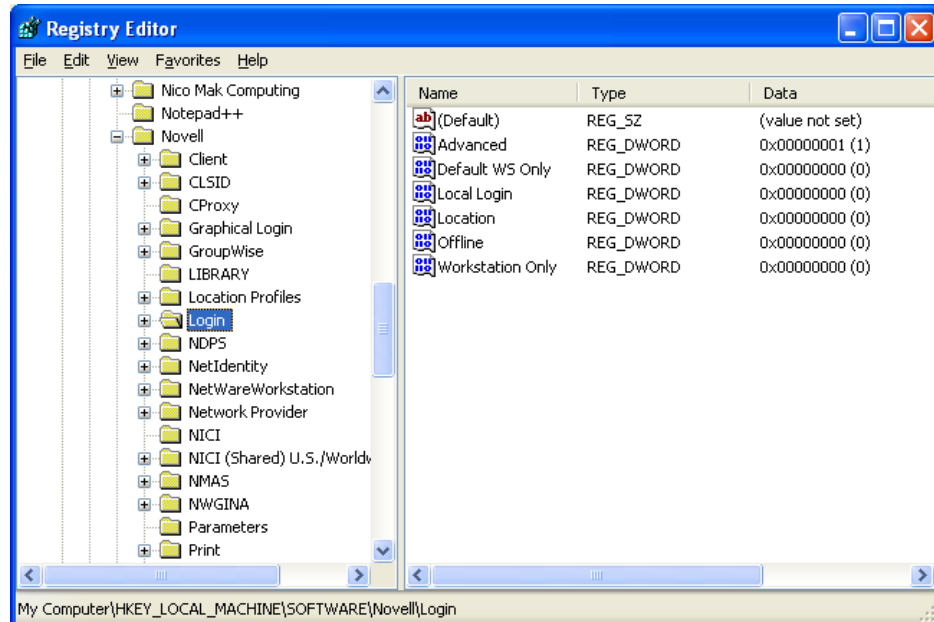
### The Solution

The only solution to this problem is to re-enable **Workstation-Only** and the **Advanced Button** via the Windows Registry.

To see how to enable “*Workstation-Only*” and the “*Advanced Button*”, read on :

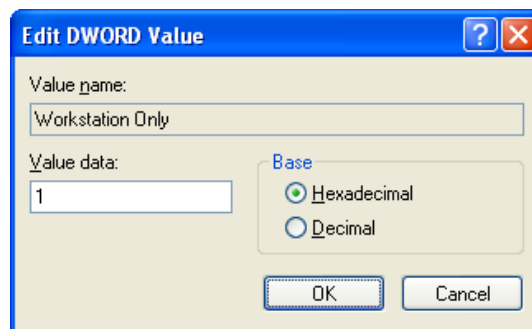
- Boot the PC or Windows Server (typically Windows 2003 Server) into **Safe Mode**.
- Open the Windows Registry Editor (REGEDIT).

- Drill down to the following registry key :  
**HKEY\_LOCAL\_MACHINE\SOFTWARE\Novell\Login** , as shown below :



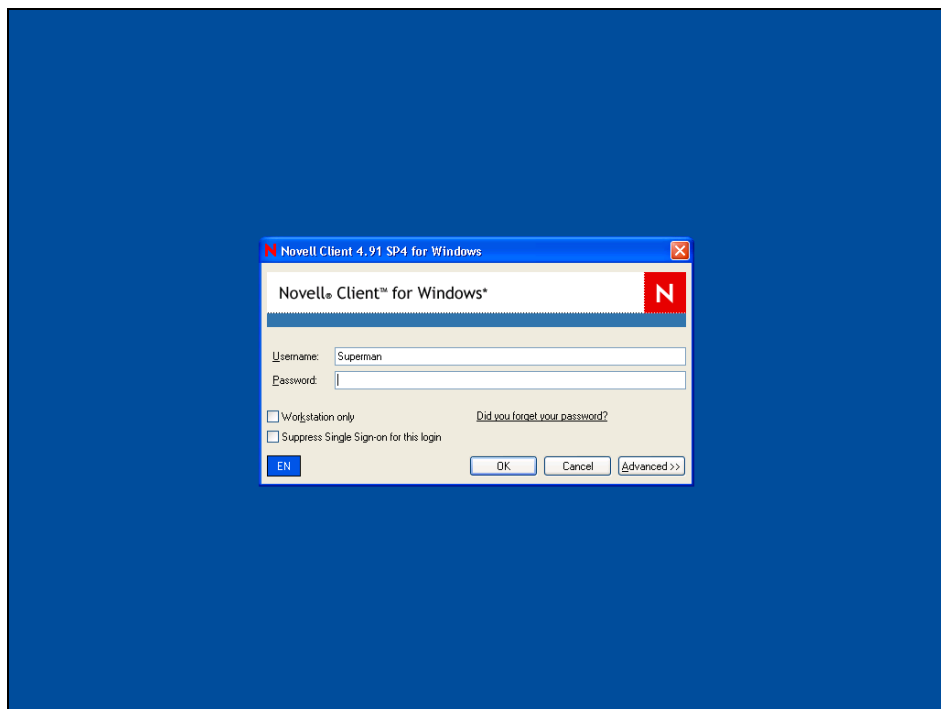
- Open both the **Advanced** and **Workstation Only** registry subkeys (in the right pane in the above screenshot) and change their values to 1 (0 = disabled / 1 = enabled), Note : you will need both features enabled, not just “*Workstation-Only*” as, if you only enable “*Workstation-Only*”, you still won’t be able to login locally to the PC/server since it will still try to connect to its normal Domain Controller by default. You therefore also need the “*Advanced Button*” in order to be able to change the login location from the Domain Controller to the local PC.

So, change the two registry sub-keys as shown below :





- Close the Registry Editor.
- Reboot.
- You will now be able to login locally by using a combination of both **Workstation-Only** and the **Advanced Button**, as per the login screen below :



- 
- For enhanced security do NOT forget to reset those two settings after you have done all the work that you needed to do to this PC/Server. You can do that either via the registry again (and changing back the above registry keys), or through the *Novell Client for Windows* settings on your network connection's settings (do so via the Advanced Login tab).
  
  - That's it. You're done !**

ooooooooOOOOOOoooooooo