

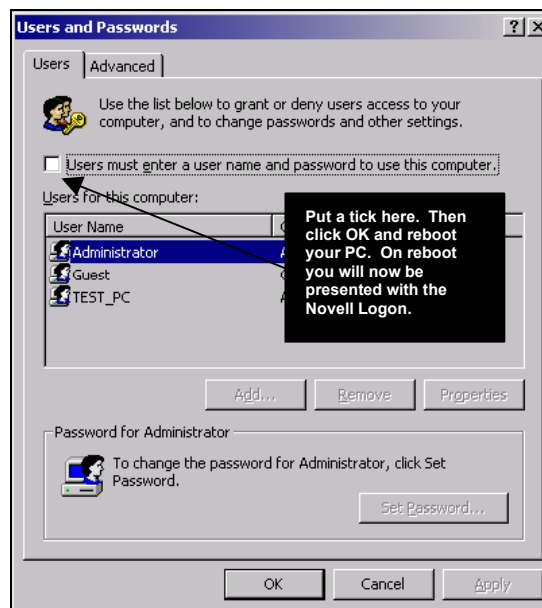
PC does not login to network after installation of Client 4.83 for Windows 2000/XP

You upgrade the **Novell NT Client** on your Windows 2000 or Windows XP PC to **version 4.83**, and on reboot you find that your PC boots straight into Windows without presenting you with the Novell logon as it used to do with versions 4.80 and 4.81 of the client.

The Solution

This is a **Novell NT Client 4.83** installation bug which, for some unknown crazy reason, turns off the Windows 2000/XP login setting ! To correct the problem upgrade to the latest Novell Client which, at the time that this document is being updated, is **version 4.91 SP1**. If you absolutely need to remain on version 4.83, then do as follows :

- Start \ Settings \ Control Panel.
- Double-Click on **“Users and Passwords”**.
- This will bring up the following window :



- As illustrated above, put a tick against ***“Users must enter a username and password to use this computer”***.
- Click **OK**.
- Reboot your PC.
- You should now be presented with the Novell Logon on reboot.**

ooooooooOOOOOOoooooooo