

pdfFactory Pro – AnswersThatWork's recommend configuration for version 2.xx and later

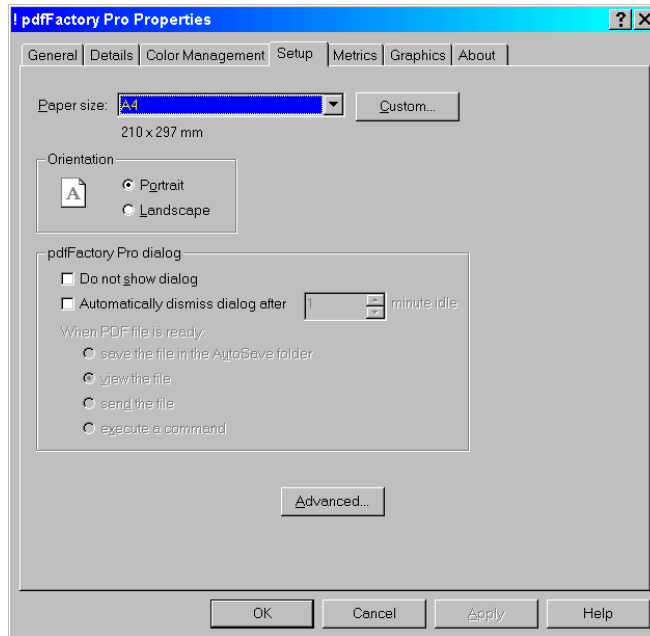
FinePrint's **pdfFactory Pro** is one of the best PDF generation programs on the market, if not the best in our opinion. However, the default configuration of pdfFactory Pro leaves a lot to be desired, to the point where, in some cases, the quality of the generated PDFs puts off the end-user and the end-user goes on to buy the full Adobe Acrobat program totally unnecessarily.

The purpose of this document is to make you discover the many features of pdfFactory Pro and to provide you with the configuration that we use at all our clients. We have found this configuration to satisfy 95% of the needs of most users who need to generate **first class PDFs** with pdfFactory Pro.

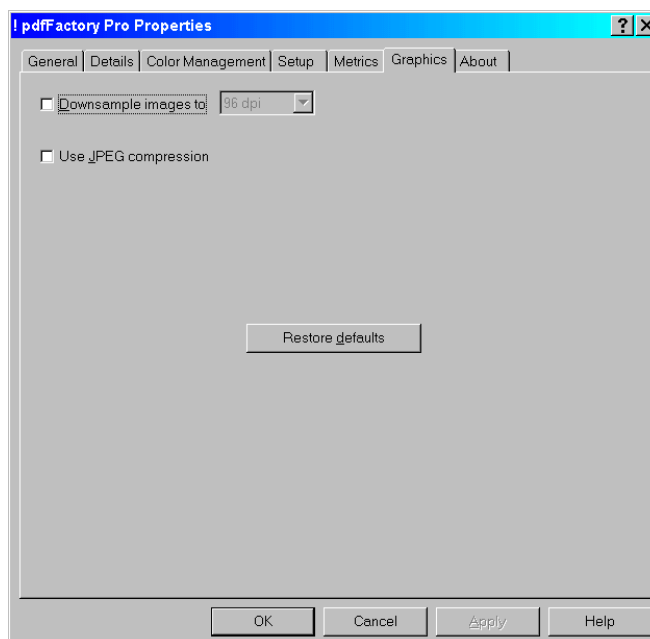
This document assumes you have pdfFactory Pro 2.xx (pdfFactory Pro is at version 2.43 at the time of writing of this document).

- Go to the **Printers** Control Panel ("Start \ Settings \ Printers" on Windows 95/98/ME/2000 – "Start \ Settings \ Printers and Faxes" in Windows XP when using the classical mode, or "Start \ Printers and Faxes" in standard Windows XP mode).
- Right-click on the **pdfFactory Pro** printer and choose "Properties".
- If you are using **Windows 2000/XP** click on Printing Preferences on the GENERAL tab.

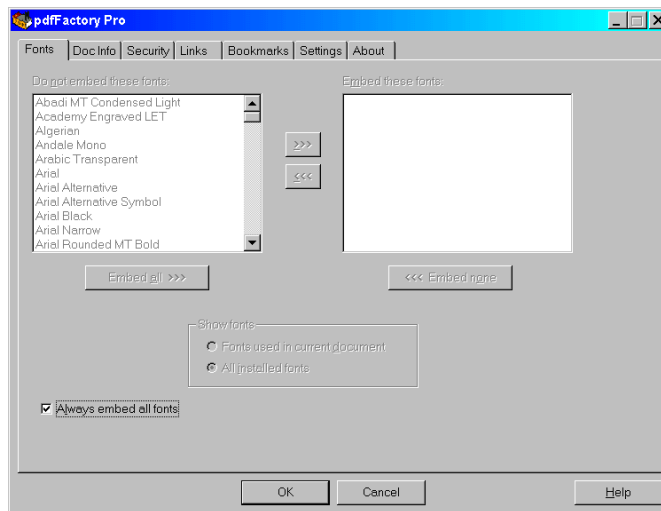
- ☐ Click on the **Setup** tab and set up that tab accordingly, e.g. A4 in Europe and many parts of the World, or Letter in the USA. Click **APPLY**.



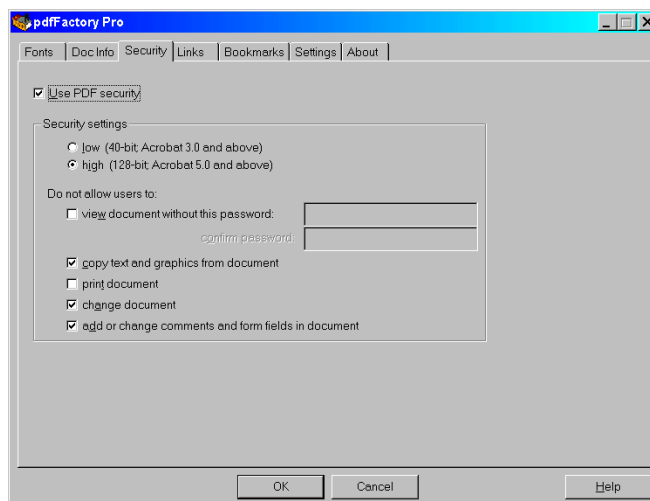
- ☐ Go to the **Graphics** tab. Uncheck both the *Downsample Images* and *Use JPEG compression* options. These options are used to create smaller PDF files and unless you are including extraordinarily large pictures in your PDF document, or you need to email this to someone who connects to the Internet via dial-up modem rather than broadband, you should not use this option as it results in picture degradation. With a majority of the world now on broadband, we recommend opting for **picture quality** over reduced file size. Click **APPLY**.



- ☐ Choose the **Fonts** tab. (On Windows 95/98/ME, go back to the *Setup* tab and then click Advanced to find the FONTS tab). Choose “Always embed all fonts” as this ensures that the PDF files you generate will always print properly, and look exactly how you want them to look, when they are printed on a recipient’s printer who may not have on his/her Windows PC the fonts that you used in your document. Click **APPLY**.



- ☐ Choose the **Security** tab. Configure it exactly as shown below. This option “secures” your PDF file so that it cannot be modified by the recipient using Adobe Acrobat. This tab is the main difference between *pdfFactory* and *pdfFactory Pro* : the ability to prevent the recipient from modifying the document you created (and therefore falsifying it). Click **APPLY**.



- Choose the **Settings** tab.
Uncheck "Save Settings each time the dialog is closed".
Click **Save all settings now** to save all the configuration changes you have just implemented.

- Click **OK** to close the pdfFactory Pro configuration screens.

- That's it. You're done.** pdf Factory Pro is now configured in a way which will give you optimal results at all times and which will also produce secure documents (non-modifiable documents) by default. Should you need to change the above options for a particular PDF file, simply do so at the time of creation of the PDF – this will not affect the defaults for subsequent jobs.

ooooooooOOOOOOoooooooo