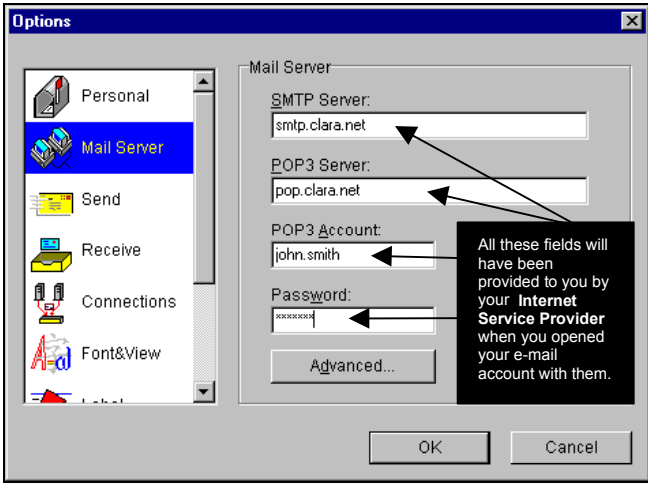
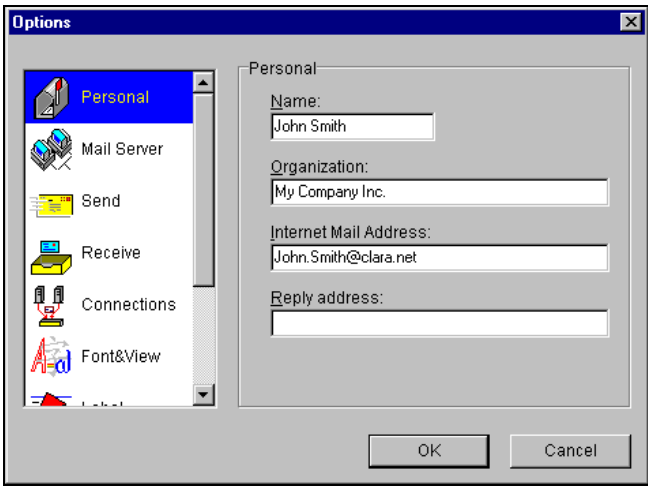
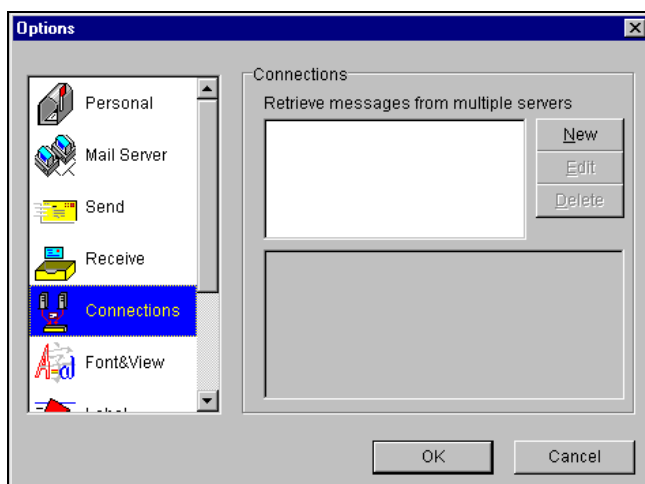
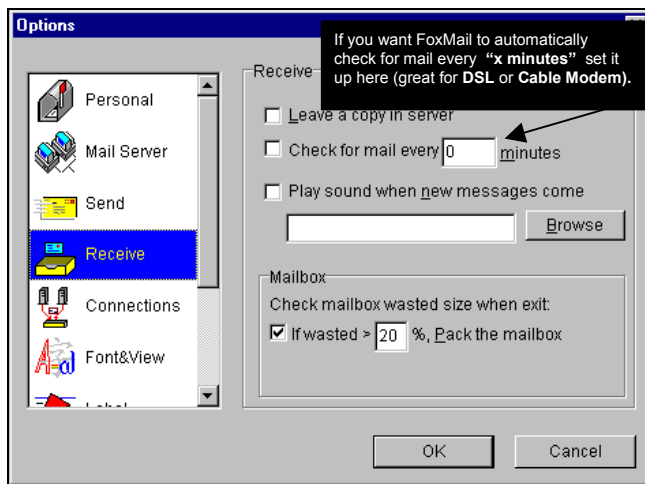
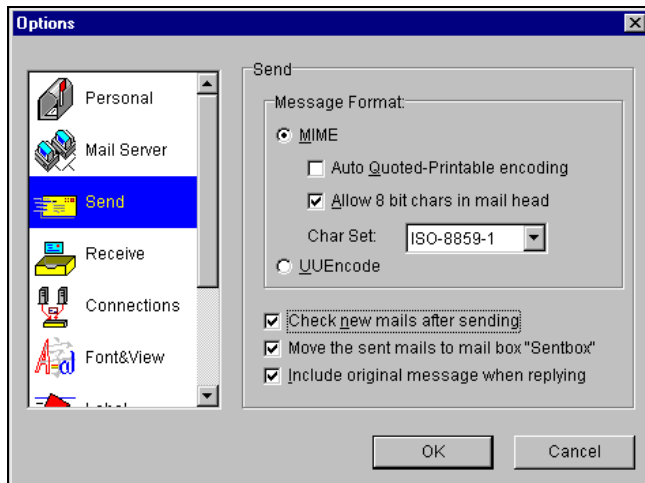
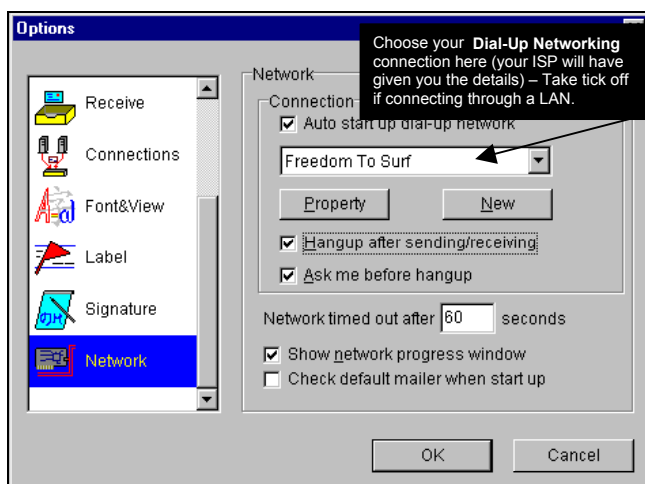
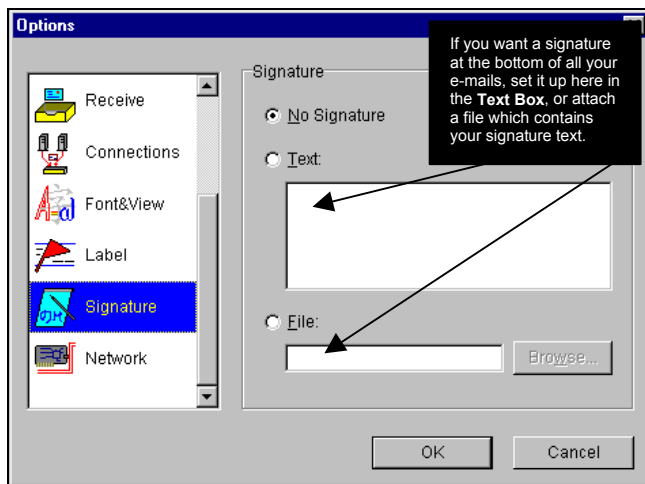
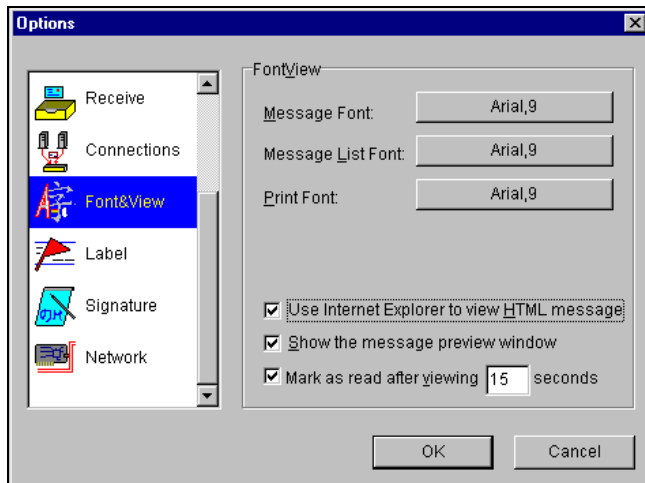


FoxMail 2.1 – Setup Guidelines

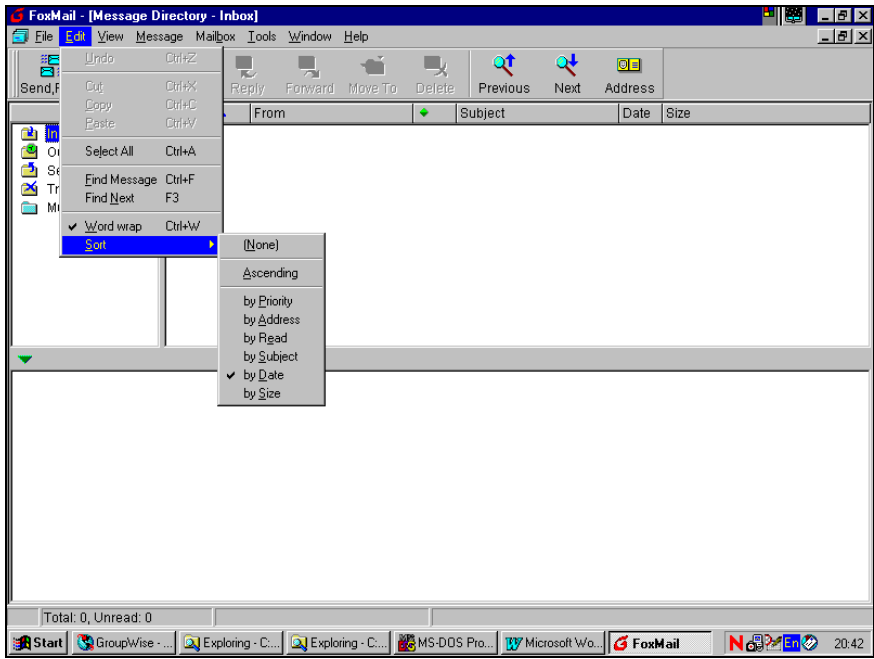
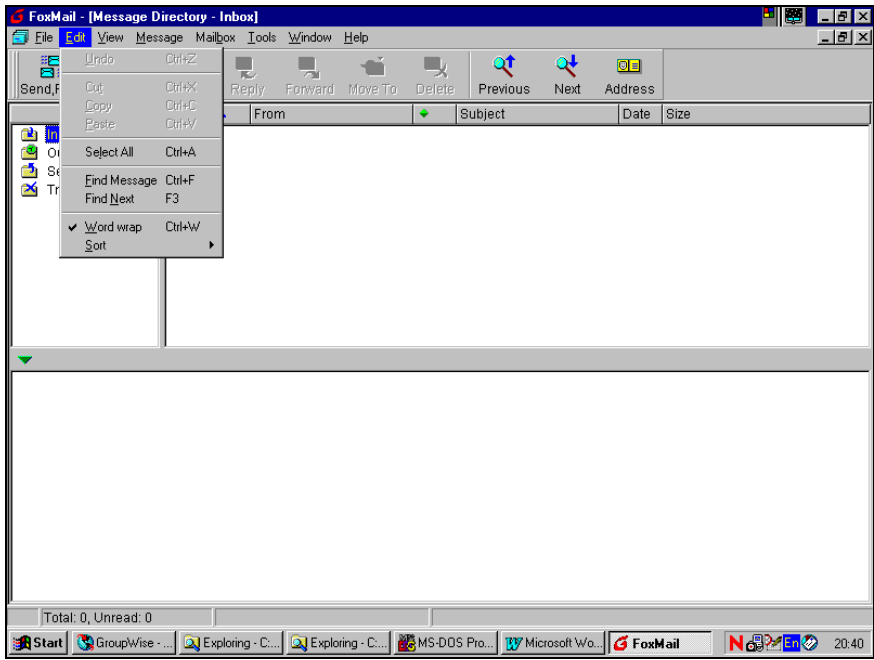
Tools \ Options settings





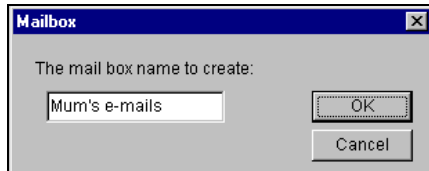


Setting up Word Wrap and Mailbox Sorting

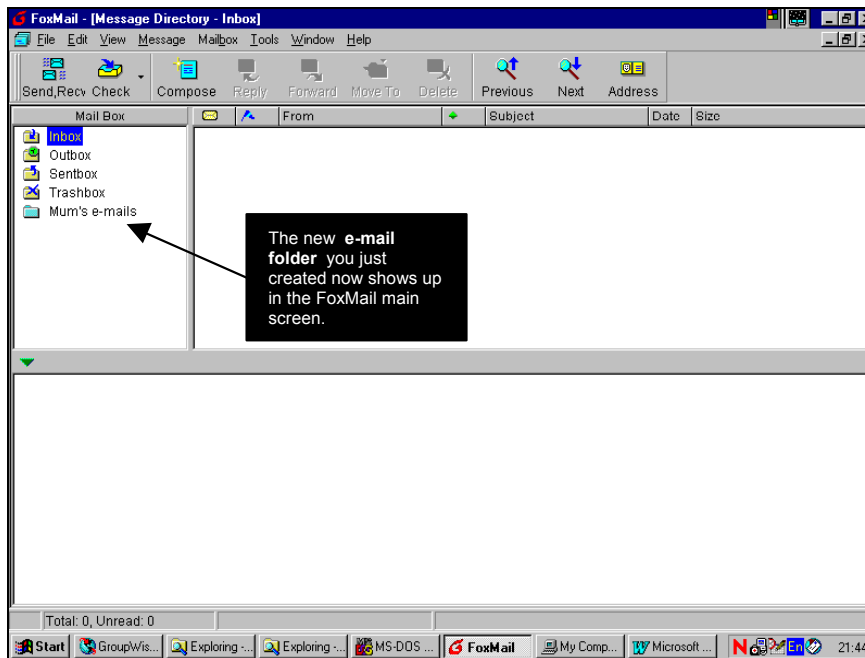


Creating an e-mail folder

Click on the “**Mailbox \ New**” menu option and the following window will pop up :



Once you click **OK** the e-mail folder you just created will show up in the FoxMail main screen :



ooooooooOoooooooooooooooo