

## How to create RAID 1 mirroring with a hard disk that already has data or an operating system on it

<b>Date</b>	
<b>Company</b>	
<b>PC / Server details</b>	
<b>Your name</b> (Who is doing the job)	

### When to use this document

One of the most irritating assumptions made by manufacturers of RAID controllers is the assumption that RAID 1 mirroring will only ever be set up before the Windows operating system is installed, or before a hard disk is used as a second drive. Well, nothing is further from reality as many end-users and small businesses decide to implement RAID 1 mirroring at some stage after a PC or small server has been set up, and when they do ..... they usually won't be able to find anything in the documentation which explains how to do it with the result that many users believe they have to re-install everything from scratch if they want to convert to a RAID 1 mirroring setup !

This document rectifies the situation by explaining how to set up RAID 1 mirroring with an Adaptec SATA controller, whether it be a SATA-II controller or a Serial Attached SCSI controller (SAS), in a situation where the hard disk to be mirrored already has a Windows operating system installed on it.

If you are reading this document and do not know what RAID 1 mirroring is : the most crucial part of a server PC, or of any PC for that matter, is the hard disk. If you are a home user, the likelihood is that either you rarely backup your PC, if ever, or you backup some of the data from time to time to a USB hard disk. If you are a small business you probably have a backup tape drive for automated overnight backups. Well, the addition of a second hard disk (the backup hard disk) inside your PC and the setting up of RAID 1 mirroring whereby your main hard disk is automatically mirrored to the second hard disk, provides great added protection against an unexpected failure of your main hard disk, with near instant switch-over to the backup hard disk when disaster strikes.

### Preparation (avoiding disaster!)

Setting up RAID 1 mirroring using a hard disk with existing data (or an existing operating system) can have only two results : it is successful and you're off and running, or **your entire hard disk is wiped out !** The second possibility is the one you need to focus on right from the start, and by this we mean ..... **focus on avoiding it completely !!**

**Plan the job :** the initial replication phase of your source hard disk to the target hard disk will take anything from 5 to 10 hours depending on the sizes of the hard disks involved. Therefore, if this is a business fileserver, you will need to plan this as an after-hours job or a weekend job.

Next, before you even think of doing anything, **take an image backup of your hard disk**. There are many good products out there that you can use to take images of a hard disk – after thorough evaluation of many of those products, we ourselves prefer the low-cost yet comprehensive products from **TeraByte Inc** (TeraByteUnlimited.com), **Image for DOS**, or **Image for Windows**. We tend to use **Image for DOS** which you can use to backup any type of hard disk (Windows, NetWare, Linux), but if you are more comfortable with a Windows interface, then go for **Image for Windows**. Either way, our recommendation is that you should buy **Image for Windows** which for \$9 gives you **Image for Windows**, **Image for DOS**, **Image for Linux**, and a few other goodies.

*Tip : IT professionals and IT departments – check out TeraByte's [Image Technical Licence](#) and [Image Deployment Licence](#) interesting offerings.*

Test the image backup you just made. This is as important as making the image itself. Do not go to the next stage until you know you will be able to use your backup image if something goes drastically wrong.

### Getting Windows to recognize the Adaptec controller

Now that you have a backup image that you can rely on if things go wrong, shut down your PC/server and physically install your Adaptec RAID controller into the PC/server (we used an Adaptec 1220SA for the purpose of this document).

Do **not** connect the boot hard disk to the adapter. Leave it connected to the motherboard's onboard controller for the moment.

Boot the PC/server into Windows.

- Go to [www.ATWDRIVERS.com](http://www.ATWDRIVERS.com) and download the **very latest drivers** for your Adaptec RAID controller (the drivers that come on the installation CD might not be the very latest drivers).
- Install the drivers you just downloaded and make sure that Windows now shows the RAID adapter properly installed.
- Now that your Adaptec RAID controller is fully installed into Windows we know that if you connect your boot hard disk to the Adaptec RAID controller, your PC/server will successfully boot into Windows.
- So shut down your PC/server.
- Now connect your main hard drive (the one that this PC/server boots from) to **Port 0** of your Adaptec RAID controller. Make sure it is definitely **Port 0** and not Port 1, Port 2, or any other port.
- Start your PC/server again and make sure it boots properly into Windows. If it does you are now ready to start the creation of your RAID 1 mirroring system.

*Note : typically, on server operating systems, you will get a message saying that Windows has detected a hardware change and that it wants you to re-activate Windows within 3 days. You can do so at this stage or once you have completed the mirroring of your hard disk – your choice.*

### Going for it

Now that we know our Adaptec controller works fine, we can work on actually setting up RAID 1 mirroring.

- Shut down your PC/server.
- Now connect the hard disk you will be using as **mirror hard disk** to **Port 1** of your Adaptec controller.

*Tip : A good practice to have is to make sure before this step that the drive you intend to use as mirror hard disk is actually empty, just in case you have picked up a drive which "someone" forgot to label appropriately and that drive is a drive you really do not want to overwrite !!*

- Boot your server and watch out for **Press <Ctrl><A> for Adaptec RAID Configuration Utility**. When the message appears, press **Ctrl+A** to go into your Adaptec controller BIOS (also called the “*Configuration Utility*”). Keep pressing **Ctrl+A** until you get a message confirming that “*Ctrl+A was pressed*”.
- Once inside your Adaptec controller’s BIOS, choose **Disk Utilities**.
- Inside **Disk Utilities** check that both your hard disks are showing properly, and make sure they show up as **SATA-II (SATA-2)** just in case your hard disks have jumpers which configure them as SATA-1 (SATA-2 shows up as **3.0Gb/s** transfer speed).
- Escape back to the Main Menu.
- This time choose **Array Configuration Utilities**.
- Next, choose **Configure Drives**
- Press the **space bar** on each of the drives to select both drives so that both drives show in **SELECTED DRIVES** in the top right-hand corner of the screen.
- Press **Enter**.
- At this point you will get a warning saying : “**WARNING : One or more selected drives has a valid partition and there is a risk of losing the data if configured. Do you want to continue ? (Yes/No):**”
- Enter **Y** for **Yes**.
- The screen will briefly show “*Configuring the drives ...*” and will then take you back to the Main Menu.
- Next, choose **Manage Arrays**.
- Your two drives should show as **SIMPLE VOLUME** in the “**List of Arrays**” in the top right corner of the screen with your original LIVE hard disk showing on **Port 0**. This step is purely to make sure we are on track, that everything has been connected properly, and that all the steps up to this point have been followed correctly.
- Escape back to the Main Menu.
- Now choose **Create Array**.

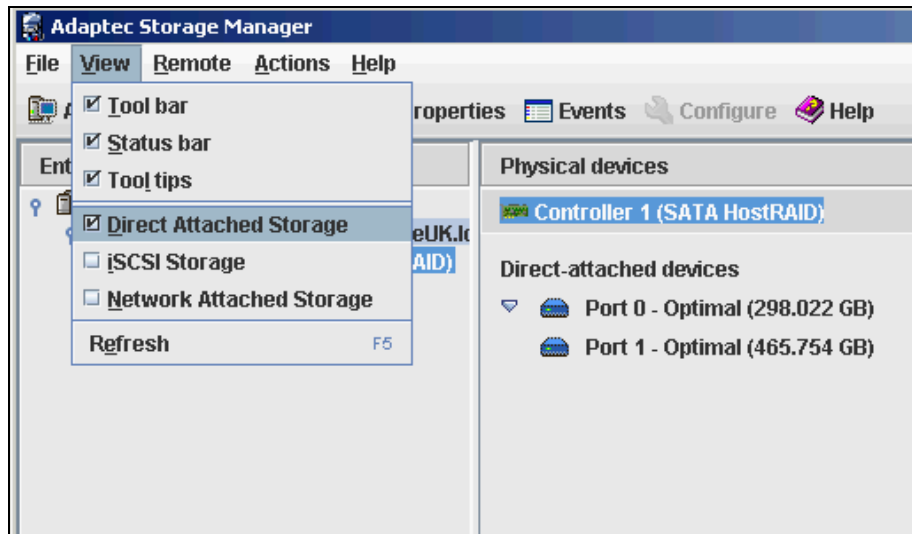
- On the next window your two drives will show again. **This is your last opportunity to check that you have the correct SOURCE DRIVE on Port 0.** Do so. For example, if the two drives are of different size (the target mirror drive must be of equal size, or larger, than the source drive), or of different makes, or they are different model versions, the information on the screen will easily enable you to verify that you have the hard disks connected properly.
- Now, press the **space bar** on each of the drives in turn so that they show up in the top right-hand corner in the **SELECTED DRIVES** section.
- Hit **ENTER**.
- On the next screen, **Array Properties**, you are prompted to choose what type of RAID you want to use. **Choose RAID 1.**
- Next, give a name to your RAID array, e.g. : **My company Svr 1 RAID1**
- You are next prompted with **Create RAID via.** Choose **BUILD** and press **Enter**.
- Press **Enter** on **DONE** at the bottom of the window.
- The next window you get is **Select Source Drive.**
- Choose the hard disk showing on **Port 0** and press **Enter** (now you understand why we've been focusing on connecting your original source hard disk on Port 0 !!).
- You will now get the following warning message : **“Building the RAID 1 may take a few hours or more to complete. Do you still want to continue ? (Yes/No) :”**
- Press **Y** to start the building of your RAID 1 system.
- You will now see a screen which displays the progress of your RAID 1 system being built (in effect, your original source hard disk being mirrored onto the target hard disk).  
**At current SATA-2 hard disk speeds, December 2009, each 100GB of data takes, at best 20 minutes to complete, and, at worst, 2 hours to complete. So plan on this phase taking anything from 2 to 12 hours.**

- At this stage you can do either of two things :
  - You can wait till the mirroring process completes, and once it has completed continue on with the next step below.
  - Or, once the mirroring process has reached 1%, you can turn OFF your PC/server, reboot it, log into Windows, and continue using the PC/Server. The mirroring process will continue in the background, something you can monitor yourself through the Adaptec Storage Manager software described in the next section.
  
- At the end of the process you will get the following message : **“Building the array is successfully completed”**.
- Press any key to return to the Main Menu.
- Next, verify that everything is alright. Choose **Manage Arrays**, then press **Enter** on your RAID 1 system (array), and then check that the **Array Status** shows as **OPTIMAL**. If it does, you're in business.
- Exit the Adaptec Configuration Utility and reboot your PC/server.

#### Putting the finishing touches

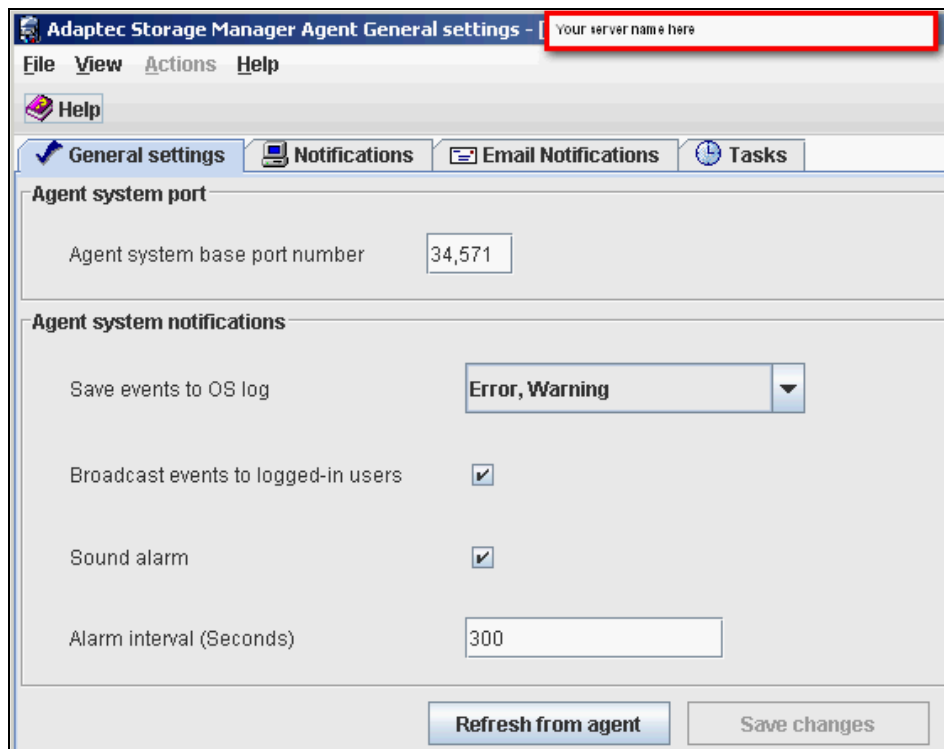
- Now that your PC/server is up and running with the safety of RAID 1 mirroring, you will need to install the monitoring software which will enable you to monitor the good running of your RAID system, or whether your PC/Server is successfully building/rebuilding the RAID 1 mirroring system, etc....
- Locate the **Adaptec Storage Manager** CD, or download the software from [www.ATWDIVERS.com](http://www.ATWDIVERS.com). At the time of writing of this document the latest version of Adaptec Storage Manager is **version 5.10.17173 (23-Aug-2007)**.
- When you install the software you will be prompted to create an “Administrator” username and password. Choose **Direct Attached Storage** and change the default “Admin” username to **Administrator** and use the same password as the Administrator password on your PC/server (to avoid forgetting it). Next, document this username and password.

- Once you are in **Adaptec Storage Manager** immediately go to the **VIEW** menu and configure it as follows for a more user friendly configuration :



- As soon as you check **Direct Attached Storage** your new RAID 1 mirror system will show. Double-click on it, login, and it will show the information to the right in the above screenshot. If it says **Optimal** for both drives, then you're in business.

- Next, configure how you want the software to alert you if there is a problem with your RAID 1 system (ie. one of the disks is generating errors). Click **CONFIGURE** on the toolbar and configure the **General Settings** as shown below :



- Next, click on the Email Notifications tab and set up an email alert so that the Adaptec software emails notify you if there is a problem with your RAID 1 system.

For this you will need to set up one or more email recipients, e.g. yourself as System Administrator, you will need to set up a sending email address, e.g. [RAID-1\\_System\\_Server1@MyCompany.com](mailto:RAID-1_System_Server1@MyCompany.com), and you will need to know the name of the SMTP server you can use to send the email through. If you have an internal mail server such as Microsoft Exchange or Novell GroupWise, simply use the IP address of your Exchange or GroupWise server; if you instead use POP mail, then use your ISP's SMTP server - if you do not know it try this page on our website, [www.ATWISPS.com](http://www.ATWISPS.com).

Do not forget to specify against each recipient the type of information you want the Adaptec Storage Manager software to send you : at AnswersThatWork we normally set it to **Error, Warning, Informational**.

- Click on **Save changes** to save your new configuration.

#### Replacing a faulty drive in your RAID-1 system

One you have set up your RAID 1 array, you will want to know how to replace a faulty hard disk when one does go faulty in the future. If you do encounter this situation, follow these steps :

- Shut down your PC/server.
- Disconnect the faulty hard disk (which you will have identified through the Adaptec Storage Manager software).
- If the hard disk you are replacing is the master hard disk from **Port 0**, then switch the hard disk that is staying, from Port 1 to Port 0, so that, for consistency of procedure, you PC/server always boots from **Port 0**.
- Replace the faulty hard disk with a new hard disk of a size equal or greater than the remaining hard disk. This replacement hard disk should be going on **Port 1**.

*Tip : A good practice to have is to make sure before this step that the drive you intend to use as mirror hard disk is actually empty, just in case you have picked up a drive which "someone" forgot to label appropriately and that drive is a drive you really do not want to overwrite !!*

- Boot your server and watch out for **Press <Ctrl><A> for Adaptec RAID Configuration Utility**. When the message appears, press **Ctrl+A** to go into your Adaptec controller BIOS (also called the "*Configuration Utility*"). Keep pressing **Ctrl+A** until you get a message confirming that "*Ctrl+A was pressed*".
- Once inside your Adaptec controller's BIOS, choose **Disk Utilities**.
- Inside **Disk Utilities** check that both your hard disks are showing properly, that the new hard disk is of the correct size, and make sure both the hard disks show up as **SATA-II (SATA-2)** just in case your hard disks have jumpers which configure them as SATA-1 (SATA-2 shows up as **3.0Gb/s** transfer speed).
- Escape back to the Main Menu.
- This time choose **Array Configuration Utilities**.
- Next, choose **Add / Delete Host Spare**
- Press the **INS (Inser)** key to select the new hard disk you installed.
- Press **Enter**.
- At this point you will get a warning saying : "**Do you want to create a spare ? (Yes/No) :**"
- Enter **Y** for **Yes**.
- Press **Escape** to go back to the Main Menu.
- Next, choose **Manage Arrays**.
- In the "**List of Arrays**" in the top right corner of the screen press **Enter** on your current RAID 1 array.
- Press **Ctrl+R** to **Rebuild your RAID 1 array**.
- The screen will change and you will now get the **Array Building Progress Screen** showing.
- Once the building process reaches **1%** turn off your PC/server, restart it into Windows, log in to Windows, and then start the Adaptec Storage Manager software to monitor the progress of the rebuilding process (Remember : Adaptec Storage Manager will in any case email you of the progress of this rebuilding process!).
- Once the rebuilding is complete your system is back up and running but this time with one of the hard disks having just been replaced.

**Some interesting findings on  
Performance issues**

**Adaptec** have always been considered as the kings of RAID, with LSI Logic, formerly BusLogic, not far behind.

**Intel**, because they are *Intel* (!), have always been highly regarded for anything from motherboards, network cards, graphics chipsets, to onboard hard disk controllers.

**NVidia's** onboard controllers have demonstrably faster onboard SATA-II controllers than VIA and AMD.

Quite separately the general wisdom is that RAID performed through good onboard RAID hard disk controllers will always outperform RAID done through PCI or PCI-E RAID controllers.

Well, we too at AnswersThatWork subscribed to all the above, until we ran tests with Adaptec's latest affordable SATA-II RAID controllers, and we were in for a major shock : [all Adaptec SATA-II RAID controllers, such as the low-cost 1220SA, or 1225SA, or the more expensive 1420SA, 1430SA, 2420SA, and 2820SA, all thoroughly outperform all onboard Intel, NVidia, or Promise SATA-II controllers, by a minimum of 50% to 150%. It was staggering – we were so stunned by the first batch of results we had to run the tests again and, Yes, Adaptec is the undisputed king of SATA-II performance. As a general rule it outperforms onboard NVidia controllers by about 50% and pulverises onboard Intel controllers by anything from 70% to 100%.](#)

[Wow !](#)

Enjoy .....

ooooooooOOOOOOoooooooo